

# TCM eProduction

Access to Production Information YOU NEED, When you NEED IT!

**eProduction** is a web centric shop management system for priority dispatching and data collaboration. With **eProduction** you are able to pull priority jobs to the top of the on-line dispatch based on priority code or many other selection criteria such as customer number (for your build-to order products), job number, item number, group code (to combine like processes) or any one of the ten user-defined dispatch keys. Web-centric shop floor control means your production is now virtually global in scope. Internet access is all that's needed to view and log transactions to your shop orders from remote factory locations anywhere in the world. Data loading from TCM to the SQL server is on 15-minute intervals, thus allowing for redundant data storage. Downloading of production transactions will occur every minute. The uploading of data includes all open shop orders and an item master with current inventory stock status. **NOTE: TCM V8.3 and above - all transaction updates and data loading to your TCM Client Server Applications are immediate.**

**Real-time verification on input data** - Badge # with name verification, Clock-in verification with supervisor correction, quantity verification, and other error prevention systems thus reducing (or eliminating) time the supervisor spends on the approval process.

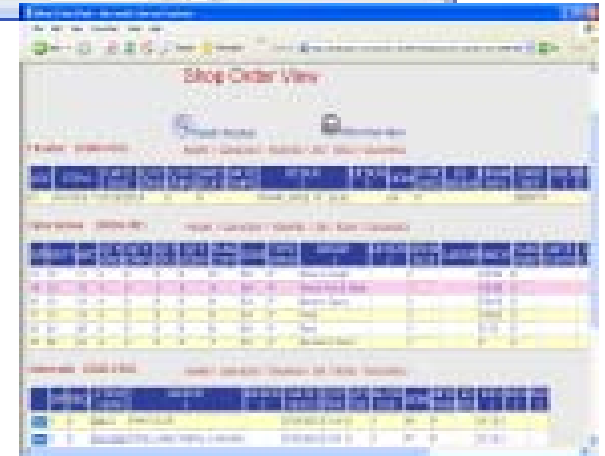
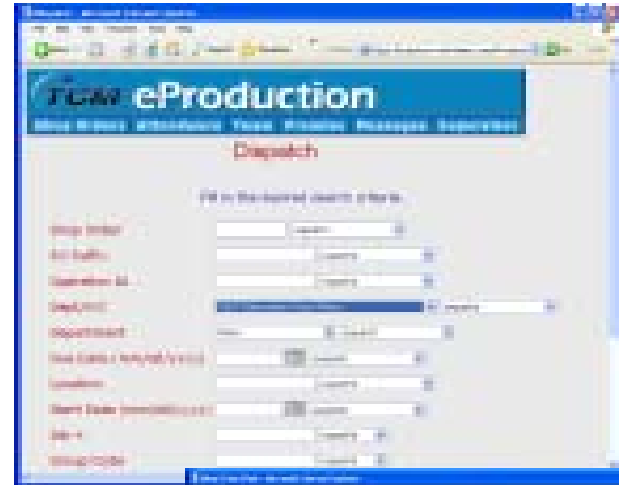
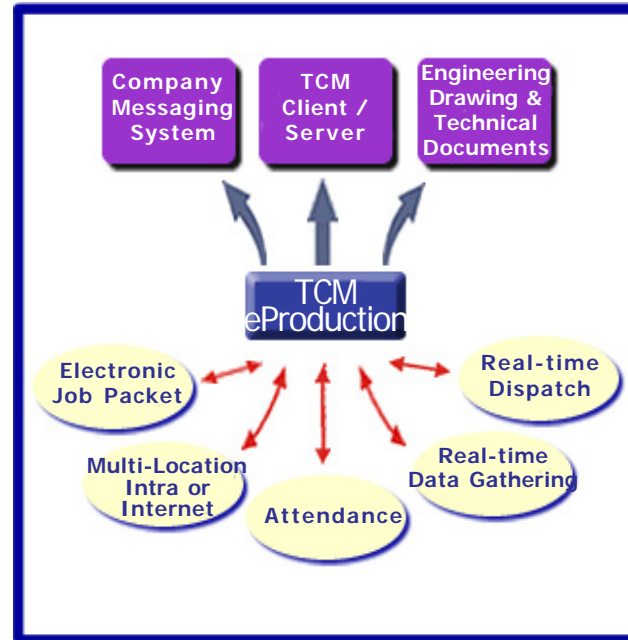
**Engineering Drawings & Technical Documents** that are attached can be displayed on your shop floor PC provided there is a viewer installed to open the documents.

**Electronic Job Packets** are transferred from TCM to shop floor PC's over your company's intranet or the internet. These job packets are viewed via a web browser and labor can be applied against them.

**"My job list"** and Supervisor List of all started and completed jobs by employee or by shift.

**Multi-Location Intra or Internet** means your production floor is accessible world-wide, factory locations anywhere can view and log transactions to your shop floor.

**Material Issues and scrap reporting** to improve inventory accuracy and control.



**Web Based TCM Shop Floor Data Collection - a cost effective solution saving your company time and money!**

## TCM eProduction Features...

**Lean Manufacturing Support** - A blending tool to fit lean manufacturing requirements. Allows MRP to do the "Push" requirement planning and scheduling, but steps in at the floor execution stage to allow for a priority "Pull" system. Past due dates are ignored. Dispatching is now executed by user requirements.

**On-line Dispatching** system enables you to adjust and control the shop floor priorities to increase the throughput of the products you need most.

**Company Wide Messaging** allows text and graphics to be displayed on the shop floor PCs (e.g. vacation schedules, production bulletins, production updates and even company newsletters).

**Attendance Reporting** is input via the web browser using a simple, easy-to-use interface. It is a closed-loop business process that goes well beyond bar code data collection for labor input to optimize all production.

**Web browser** point and click technology requires minimal training and provides consistent Microsoft navigation.



## Why does your company need TCM eProduction?

**Paperless dispatching** on the floor conforms to leading edge MES (Manufacturing Execution System) technology with electronic dispatching & recording.

**Instant ROI** can be obtained through electronic material issues, efficient labor & job-tracking, count points for finished goods and scrap.

**Job tracking and dispatching** by one or all of the following lookups: Shop Order#, Item#, Customer#, Group Code, Operation/Work Center and Due Date.

**Real-time verification on input data**, Badge# with name verification, Dept./WorkCenter selection, etc.

**Drill down** for Shop Order Header, Operations, Notes and Material records showing labor and material status.

**"My Jobs"** list allows each employee to review his work and confirm his job status.

## Pricing Questions?

Contact the  
**WorkWise Sales Center**

800-490-9010 x5269

or

414-577-5269

